

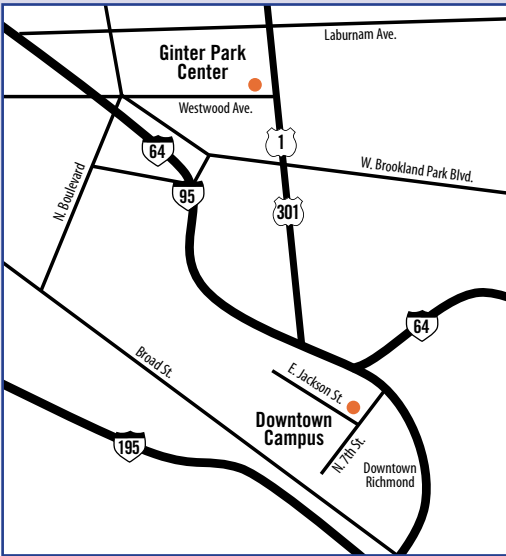
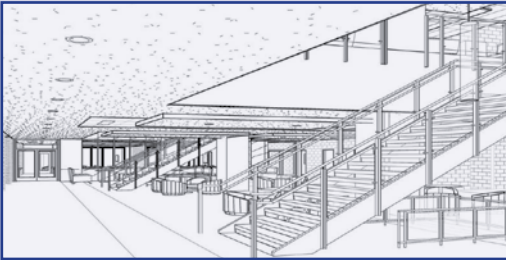
GROWTH

Reynolds supports education and economic growth in the heart of the city

The Downtown Campus of J. Sargeant Reynolds Community College reflects what's best about its urban location—high energy, diversity of talents and backgrounds, and the investment of resources for a more competitive capital city. The campus is located at Seventh and Jackson Streets—next to the Virginia Biotechnology Research Park and within walking distance to the Virginia Commonwealth University Medical Center.

A **\$12M renovation of the Downtown Campus is underway**, including classrooms, computer labs, a new library and state-of-the-art science laboratories that will support students as they pursue careers in science, technology, math and engineering (STEM) fields.

More than **2,000 students attend classes at the new Ginter Park Center**. The Center is located at 3406 Brook Road in Richmond's historic Ginter Park neighborhood. The College is currently leasing three buildings (45,000 sq. ft.) on the grounds of Union Presbyterian Seminary. Lingle Hall, Dubose Hall and the Newbury Center for Childhood Education provide classes in humanities, liberal arts, business, and early childhood education.



Ultimately, Reynolds is about jobs. When employers meet and hire our graduates, they can expect skilled workers who appreciate the value of education and are ready to apply it to the tasks at hand. For example, with more than 25 market-focused programs and clinical partnerships with area medical facilities, Reynolds is supplying the Richmond region with a highly skilled and committed healthcare workforce. In addition, the Ukrop's Center for Culinary Arts, Tourism and Hospitality housed at the Downtown Campus is highly acclaimed by Richmond area restaurateurs, with graduates sought after for immediate employment in restaurants, hotels, banquet facilities, and welcome centers throughout the Greater Richmond Region.

The Community College Workforce Alliance (CCWA), a regional partnership between Reynolds and John Tyler Community College, provides training to more than **1,000** organizations and nearly **15,000** workers each year. More than **100** instructors specialize in providing career development, industry certifications and skills assessments. Some, but not all, of Richmond-based employers whose employees receive training by CCWA, include:

- City of Richmond
- Altria
- Genworth Financial
- MeadWestvaco
- Pfizer
- Philip Morris USA
- VCU Health Systems
- Richmond Times-Dispatch
- Wells Fargo

REYNOLDS HELPS THE CITY OF RICHMOND ATTRACT, RETAIN AND TRAIN THE RIGHT WORKFORCE



EMPOWERING RICHMOND

J. Sargeant Reynolds
Community College





ACCESS

Reynolds provides access to college for ALL—regardless of circumstance

Reynolds outreach includes a wide range of services for Richmond’s youth to inspire them to seek college beyond high school.

CAREER COACHES

Career Coaches at Huguenot High School and in the Northside Initiative—a collaborative partnership between Reynolds and four non-profit organizations serving Northside Richmond youth—work with **724 Richmond Public School students** on academic planning and career exploration.

GREAT EXPECTATIONS

Nearly **140 foster care youth** transitioning from high school have a one stop shop in Reynolds’ Great Expectations program, a personalized service to help students who may not have support systems at home navigate college processes to ensure success.

MIDDLE COLLEGE

The Middle College is a college recovery program that has helped **520 students who left Richmond Public Schools** before graduating reenter the educational system, obtain their GED and transition to college or work.

DUAL ENROLLMENT

It’s hard to know who has a greater appreciation for the Dual Enrollment program most—high school students or their parents. Juniors and seniors are meeting college requirements (and saving money) by taking college-level transfer or career/technical courses.

Nearly **2,000 high-achieving students from Richmond Public Schools** have used the Dual Enrollment partnership with Reynolds since 2006...getting a head start by taking college classes while still in high school.

Families can **save as much as \$1,000** for a two-year degree and **\$5,000** for a four-year degree by utilizing the dual enrollment program.

BY THE NUMBERS

21% Students that live in the City of Richmond

4,031 Residents currently attending Reynolds

148 Residents that graduated from JSRCC last year

546* Residents enrolled at JSRCC that transferred to 4-year schools last fall

1,877 Residents that received financial aid during the last academic year

*Number reflects students transferring before completing a program.



CONTACT US

P.O. Box 85622 • Richmond, VA 23285-5622
804-371-3000 • www.reynolds.edu

J. Sargeant Reynolds
Community College

